

---

*Comfort-Aire*®

**Century**®



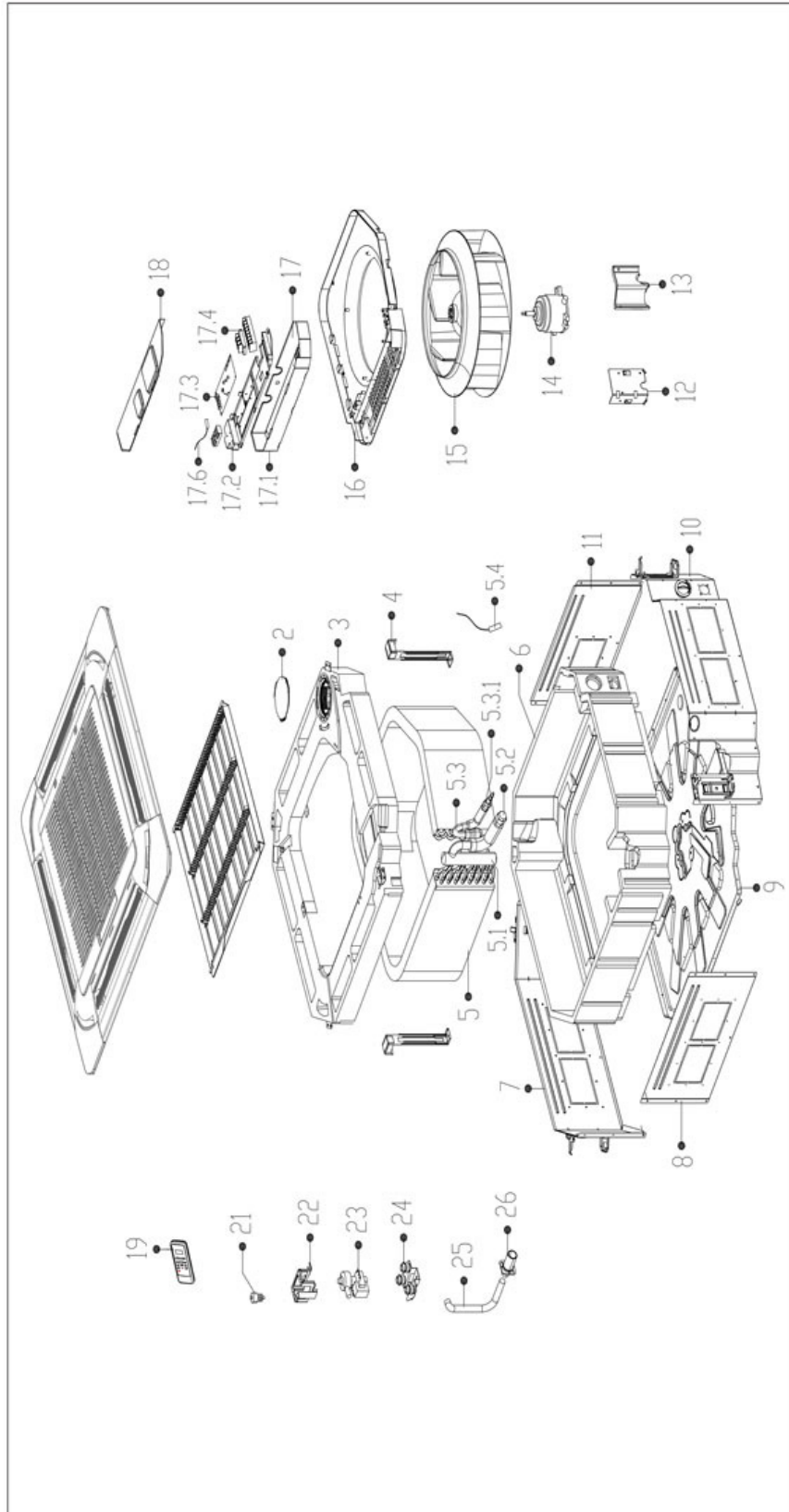
---

REPLACEMENT PARTS LIST

**Low Temperature Ductless  
Mini-Split Indoor Ceiling Cassette**

B-VMH24CU-1

# EXPLODED VIEW



## REPLACEMENT PARTS

Location	Part Name	Quantity	Part No.
2	Cover subassembly	1	12122500000025
3	Foam tray subassembly for condenser water	1	12822500000066
4	Evaporator Fixing hanger	2	12222500000084
5	Evaporator assembly	1	15822500000541
5.1	Evaporator outlet pipe subassembly	1	15122500000247
5.2	Copper nut	1	15500406000003
5.3	Evaporator inlet pipe subassembly	1	15122500000276
5.3.1	Copper nut	1	15500406000010
6	Base foam subassembly	1	12822500000014
7	Raised border subassembly	1	12222500000159
8	Raised border	1	12222500000232
9	Chassis	1	12222500000122
10	Raised border subassembly	1	12222500000135
11	Raised border	1	12222500000238
12	Evaporator fixing board subassembly	1	12222500000106
13	Pipe fixing board subassembly	1	12122500000331
14	Brushless DC Motor	1	11002015000173
15	centrifuge fan	1	12100103000040
16	Ventilation subassembly	1	12122500000591
17	Electronic control box assembly	1	17222500000103
17.1	Electronic control box	1	12222500000119
17.2	Insulation plate	1	12122500000029
17.3	Main control board subassembly	1	17122500000342
17.4	Wire joint	1	17400401000075
17.6	Room Temperature Sensor	1	11201007000283
18	Electronic control box	1	12222500000162
19	Remote controller	1	17317000A19587
20	Pipe Temperature Sensor	1	11201007000136
21	Water Level Sensor	1	11201005000006
22	water pump installation support	1	121225000001147
23	Water pump	1	17400802000012
24	Drain pump rubber washer	3	12622500000006
25	Drain pipe	1	12622500000013
26	Water pipe	1	12100509000068
36	Bracket of remote Controller	1	12117000002114
41	Accessory kit	1	12022500000002

---

Due to ongoing product improvements, specifications and dimensions are subject to change and correction without notice or incurring obligations. Determining the application and suitability for use of any product is the responsibility of the installer. Additionally, the installer is responsible for verifying dimensional data on the actual product prior to beginning any installation preparations.

Incentive and rebate programs have precise requirements as to product performance and certification. All products meet applicable regulations in effect on date of manufacture; however, certifications are not necessarily granted for the life of a product. Therefore, it is the responsibility of the applicant to determine whether a specific model qualifies for these incentive/rebate programs.

*Comfort-Cire*®  **Century**®

1900 Wellworth Ave., Jackson, MI 49203 • Ph. 517-787-2100 • [www.marsdelivers.com](http://www.marsdelivers.com)

